



# Erasmus+ Capacity Building in Higher Education (CBHE)

---

CBHE 2025

# GENERAL INFORMATION

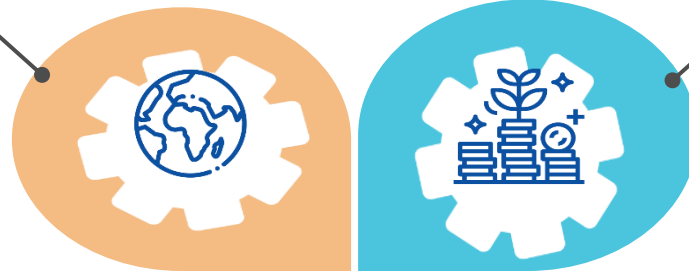


# Purpose & context

- Support the **relevance, quality, modernisation** and **responsiveness** of **Higher Education** institutions and systems
- In line with the **Sustainable Development Goals (SDGs)**, the **Paris Agreement** and **Global Gateway investment packages**

## Format & Purpose

- **International cooperation projects**
- Focus on the **needs of the third countries** not associated to the Erasmus+ Programme



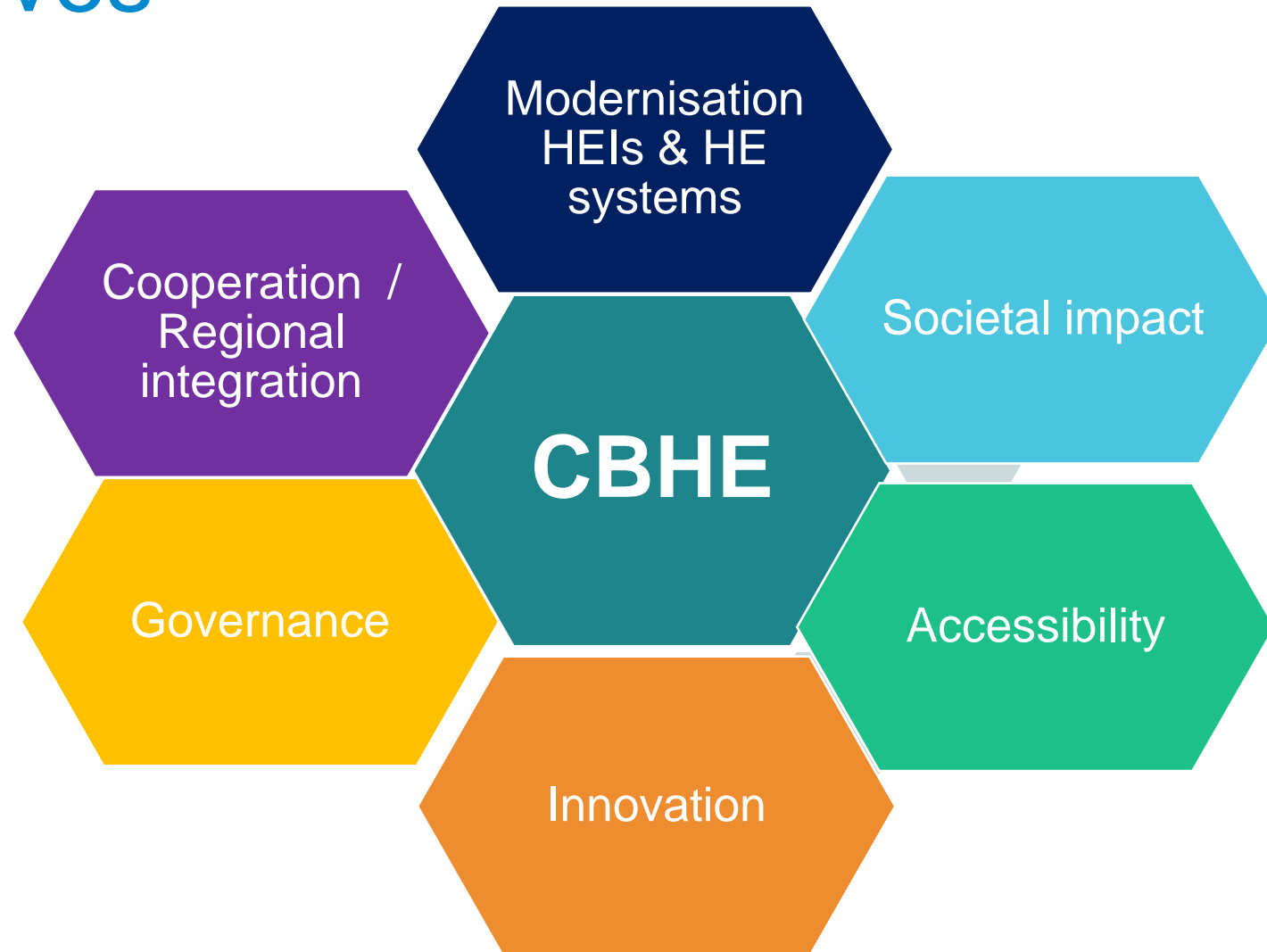
## Priorities

- **EU Erasmus+ Programme priorities** for these countries/regions

Multilateral partnerships between **organisations active in the field of higher education**

\* Please consult the final call conditions defined in the Programme Guide

# Objectives



# Eligible Regions

<b>Western Balkans (Region 1)</b>	Albania, Bosnia and Herzegovina, Kosovo*, Montenegro
<b>Neighbourhood East (Region 2)</b>	Armenia, Azerbaijan, Georgia, Moldova, Ukraine*
<b>South-Mediterranean countries (Region 3)</b>	Algeria, Egypt, Israel*, Jordan, Lebanon, Libya, Morocco, Palestine*, Syria**, Tunisia
<b>Asia (Region 5a)</b>	<a href="#">Bangladesh</a> , <a href="#">Bhutan</a> , <a href="#">Cambodia</a> , China, DPR Korea, India, Indonesia, <a href="#">Laos</a> , Malaysia, Maldives, Mongolia, <a href="#">Myanmar</a> , <a href="#">Nepal</a> , Pakistan, Philippines, Sri Lanka, Thailand, Vietnam
<b>Central Asia (Region 6)</b>	<a href="#">Afghanistan</a> , Kazakhstan, Kyrgyzstan, Tajikistan, Turkmenistan, Uzbekistan
<b>Middle East (Region 7a)</b>	Iran, Iraq, <a href="#">Yemen</a>
<b>Pacific (Region 8a)</b>	Cook Islands, Fiji, <a href="#">Kiribati</a> , Marshall Islands, Micronesia, Nauru, Niue, Palau, Papua New Guinea, Samoa, <a href="#">Solomon Islands</a> , <a href="#">Timor-Leste</a> , Tonga, <a href="#">Tuvalu</a> , Vanuatu
<b>Sub-Saharan Africa (Region 9)</b>	<a href="#">Angola</a> , <a href="#">Benin</a> , Botswana, <a href="#">Burkina Faso</a> , <a href="#">Burundi</a> , Cameroon, Cabo Verde, <a href="#">Central African Republic</a> , <a href="#">Chad</a> , <a href="#">Comoros</a> , Congo, <a href="#">Congo - Democratic Republic of the</a> , Côte d'Ivoire, <a href="#">Djibouti</a> , Equatorial Guinea, <a href="#">Eritrea</a> , Eswatini, <a href="#">Ethiopia</a> , Gabon, <a href="#">Gambia</a> , Ghana, <a href="#">Guinea</a> , <a href="#">Guinea-Bissau</a> , Kenya, <a href="#">Lesotho</a> , <a href="#">Liberia</a> , <a href="#">Madagascar</a> , <a href="#">Malawi</a> , <a href="#">Mali</a> , <a href="#">Mauritania</a> , Mauritius, <a href="#">Mozambique</a> , Namibia, <a href="#">Niger</a> , Nigeria, <a href="#">Rwanda</a> , <a href="#">Sao Tome and Principe</a> , <a href="#">Senegal</a> , Seychelles, <a href="#">Sierra Leone</a> , <a href="#">Somalia</a> , South Africa, <a href="#">South Sudan</a> , <a href="#">Sudan</a> , <a href="#">Tanzania</a> , <a href="#">Togo</a> , <a href="#">Uganda</a> , <a href="#">Zambia</a> , Zimbabwe
<b>Latin America (Region 10)</b>	Argentina, Bolivia, Brazil, Chile, Colombia, Costa Rica, Ecuador, El Salvador, Guatemala, Honduras, Mexico, Nicaragua, Panama, Paraguay, Peru, Uruguay and Venezuela
<b>Caribbean (Region 11)</b>	Antigua & Barbuda, Bahamas, Barbados, Belize, Cuba, Dominica, Dominican Republic, Grenada, Guyana, <a href="#">Haiti</a> , Jamaica, St Kitts and Nevis, St Lucia, St Vincent & Grenadines, Suriname, Trinidad & Tobago

\* As defined in the Programme Guide

\*\* Exception: Participation of Syria as defined in the Programme Guide and in CBHE specifically for Strand 3

# Three types of CBHE projects

National projects	Multi-country regional projects	Multi-country cross-regional projects
HEIs from <u>one</u> third country not associated to the Erasmus+ Programme	HEIs from <u>several countries</u> not associated to the Erasmus+ Programme from <u>one Region</u>	HEIs from countries not associated to the Erasmus+ Programme belonging to <u>several Regions</u>

---

CBHE 2025

# STRANDS



# CBHE | Strands



## **Strand 1: Fostering access to cooperation in Higher Education**

- Duration (months): 24 or 36
- Funding:  
EUR 200.000 to  
EUR 400.000



## **Strand 2: Partnerships for transformation in Higher Education**

- Duration (months): 24 or 36
- Funding:  
EUR 400.000 to  
EUR 800.000



## **Strand 3: Structural reform projects**

- Duration (months): 36 or 48
- Funding:  
EUR 600.000 to  
EUR 1.000.000
- Involvement of the Ministry



# Strand 1. Fostering access to cooperation in Higher Education



## Target groups

HEIs from least developed countries

HEIs located in remote regions

Newcomers or less experienced

Individuals with fewer opportunities.

### *Enhance management or administrative capacities*

Reforming and modernising university governance

International Relation Offices

Quality Assurance

Capacity (mobility, evaluation, planning, etc.)

### *Ensure high quality and relevant education*

modules or **study programmes**, technical or professional orientations of programmes

developing capacities **for postgraduate student and academic staff** as well as promoting postgraduate students and/or staff mobility;

implementing **training courses for HEI staff**

Increasing the **accessibility** of individuals with fewer opportunities

# Strand 2. Partnerships for transformation in Higher Education



## Target groups

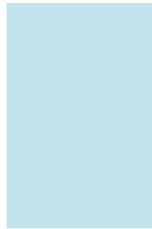
HEIs

Local actors with a link to industry and business sectors

Individuals: students, staff, learners in general

Bodies responsible for HE at local and national level

### *Innovation in higher education*



**Design of innovative curricula**



**Innovative learning and teaching methods**



**Active engagement with the business world and with research**

### *Promoting reforms of HEIs*



**Introduction of Bologna type reforms at institutional level**



**Reform of governance and management systems and structures at institutional level**

# Strand 3 - Structural reform projects



Target groups

HEIs

**National Ministry for higher education (HE)**

Research institutions

Other relevant authorities and stakeholders

Mutual learning between public authorities of the countries involved

Promote inclusive Higher Education systems

Increase capacities of bodies in charge of Higher Education

Identify synergies with ongoing EU initiatives

Foster national ownership

Efficient and effective policy making

Foster common regional strategies in Higher Education

Introduction of funding mechanisms

**NEW!**

---

CBHE 2025

# PRIORITIES



# Priorities

## Overarching priorities

- **Green Deal**
  - Regions 1, 2, 3, 5a, 6, 7a, 8a, 9, 10, 11
- **Digital Transformation**
  - Regions 1, 2, 3, 5a, 6, 7a, 8a, 9, 10, 11
- **Integration of migrants**
  - Regions 1, 2, 3, 5a, 9
- **Governance, peace, security and human development**
  - Regions 1, 2, 3, 5a, 9, 10, 11
- **Sustainable growth and jobs**
  - Regions 1, 2, 3, 5a, 6, 7a, 8a, 9, 10, 11

## Global Gateway related priorities

- [Global Gateway](#)



# Overarching priorities

## Green Deal

Contribute to a successful green and sustainable global economic recovery (including climate change, environment and energy), awareness-raising, green jobs

## Digital transformation

Improving digital skills and competences, connectivity, teacher training, digital education systems

## Integration of migrants

Recognition of qualifications, legal pathways, integration of migrants and displaced persons, education access, scholarships, language education

## Governance, Peace, Security, and Human development

Human rights, social and economic rights, democracy, fundamental values, governance, citizenship, health, youth, gender, access and inclusion

## Sustainable growth & Jobs

Skills, entrepreneurship, employability, links to the labour market and jobs creation, job opportunities, rural areas, private sector involvement

# Global Gateway related priorities

Alignment with Global Gateway related priorities is optional. Proposal should continue to select and apply one of the overarching priorities to which their thematic best responds to.

1.Strand 1 and 2  
(all regions)  
2.Strand 3  
(Regions 1-3)

Projects **must** be aligned with the Global Gateway related priorities relevant to respective countries

1.Strand 3  
(Regions 5-11)

# Global Gateway in Strand 3

Projects **must** be aligned with the Global Gateway related priorities relevant to respective countries

## 1.Strand 3 (Regions 5-11)

### National projects

to align with the **national OR Regional GG-related priority.**

### Multi-country proposals

to align with the **regional/sub-regional GG-related priority**  
WHERE APPLICABLE

### **Award Criterion 1**

– Relevance: new addition for Strand 3

### **Award Criterion 4**

- Sustainability, impact and dissemination of the expected results: new addition for Strand 3

Recommendation to involve the **Ministry** relevant to the country GG priority in addition to the mandatory participation of the Ministry responsible for HE



---

CBHE 2025

# Who can participate?



# CBHE | Who can participate?



## Who can participate?

- HEIs or organisations of HEIs
- Associations, public or private organisations active in the labour market or in the fields of education, training and youth

## Who can coordinate?

- HEIs or organisations of HEIs
- Coordinator applies on behalf of all participating organisations involved in the proposal

## What else?

Applicants must be established in:

- an EU Member State or third country associated to the Erasmus+ programme
- in an eligible third country not associated to Erasmus+ programme

**Exceptions:** Specific rules to be checked in the Programme Guide

# Minimum partnership composition (1)

## NATIONAL PROJECTS

**Strand 1**

**Strand 2**

**Strand 3**

**Only for  
Regions  
2, 3,  
5a, 6,  
7a, 8a,  
9**

**For all  
eligible  
Regions**

- **at least 2** EU Member States or third countries associated to the programme

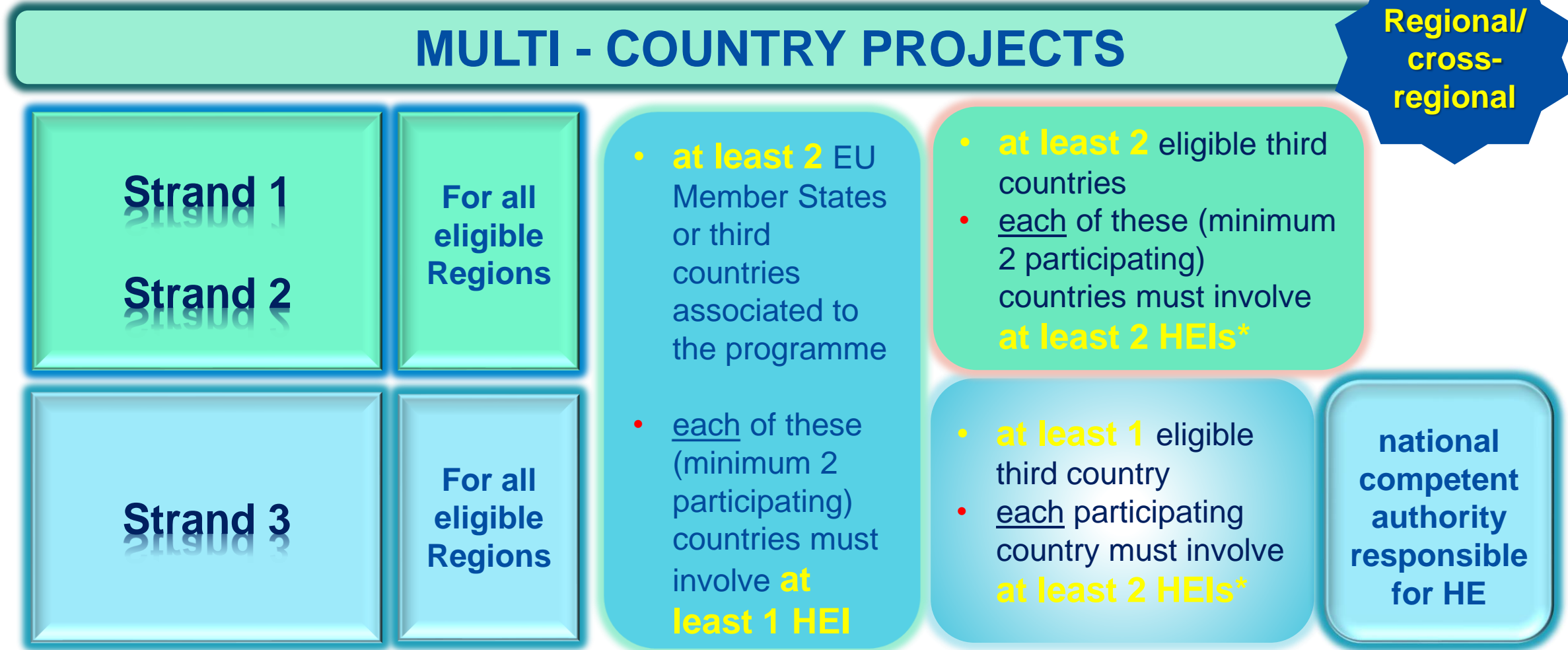
- each of these (minimum 2 participating) countries must involve **at least 1 HEI**

- **only 1 eligible third country** not associated to the programme

- with **at least 2 HEIs\***

**national  
competent  
authority  
responsible  
for HE**

# Minimum partnership composition (2)



---

CBHE 2025

# BUDGET



# Budget



## 2025 Call Budget

- approx. 107.000.000 €
- approx. 140 proposals to be funded
- Funding model: Lump sum type 2

## EU co-financing

- 90 % of the total costs

# 2025 CBHE indicative available budget and n° of projects

Regions	Indicative 2025 CBHE budget	Strand 1	Indicative n° of projects	Strand 2	Indicative n° of projects	Strand 3	Indicative n° of projects
Region 1 Western Balkans	10.800.000	3.240.000	8	4.860.000	6	2.700.000	2
Region 2 Neighbourhood East	14.850.000	4.320.000	10	7.830.000	9	2.700.000	2
Region 3 South-Mediterranean countries	9.730.000	3.182.991	7	5.547.009	6	1.000.000	1
Region 5a Asia	19.820.000	2.153.803	5	11.166.197	13	6.500.000	6
Region 6 Central Asia	5.600.000	613.334	1	2.986.666	3	2.000.000	2
Region 7a Middle East	1.000.000	-	-	-	-	1.000.000	1
Region 8a Pacific	1.000.000	-	-	-	-	1.000.000	1
Region 9 Sub-Saharan Africa	24.650.000	5.766.792	14	10.883.208	13	8.000.000	8
Region 10 Latin America	10.250.000	1.625.000	4	5.125.000	6	3.500.000	3
Region 11 Caribbean	1.000.000	-	-	-	-	1.000.000	1
<b>2025 CBHE indicative budget and n° of projects to be funded (national / regional)</b>	<b>98.700.000</b>	<b>20.901.920</b>	<b>49</b>	<b>48.398.080</b>	<b>56</b>	<b>29.400.000</b>	<b>27</b>
<b>2025 CBHE indicative budget and n° of projects to be funded (cross-regional)</b>	<b>8.300.000</b>	<b>≈ 11 proposals</b>					
<b>Indicative 2025 CBHE budget</b>	<b>107.000.000</b>	<b>≈ 143 proposals</b>					

# Budget model – Lump Sum II



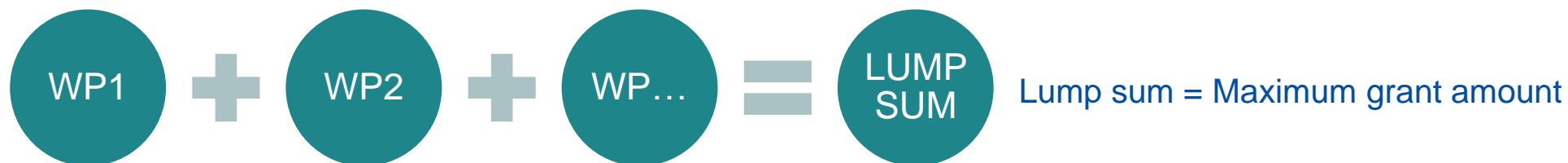


# Lump sum II – Work Packages

- Applicant will divide their project in WPs and reflect this division in the budget attached to the application
- Each Work Package will define the activities/outputs and the corresponding deliverables.



# Lump sum II – Budget allocation



Max. liability of the beneficiary after payment of balance

	WP1	WP2	WP3	WP4	WP5	WP6	WP7	WP8	Total
Beneficiary A	250.000			50.000	300.000	250.000		300.000	1.150.000
Beneficiary B		250.000	350.000	50.000			100.000	150.000	900.000
Beneficiary C	100.000	100.000		50.000		280.000			530.000
Beneficiary D		120.000		50.000			100.000	150.000	420.000
<b>Total</b>	350.000	470.000	350.000	200.000	300.000	530.000	200.000	600.000	<b>3.000.000</b>

Share of the lump sum per WP

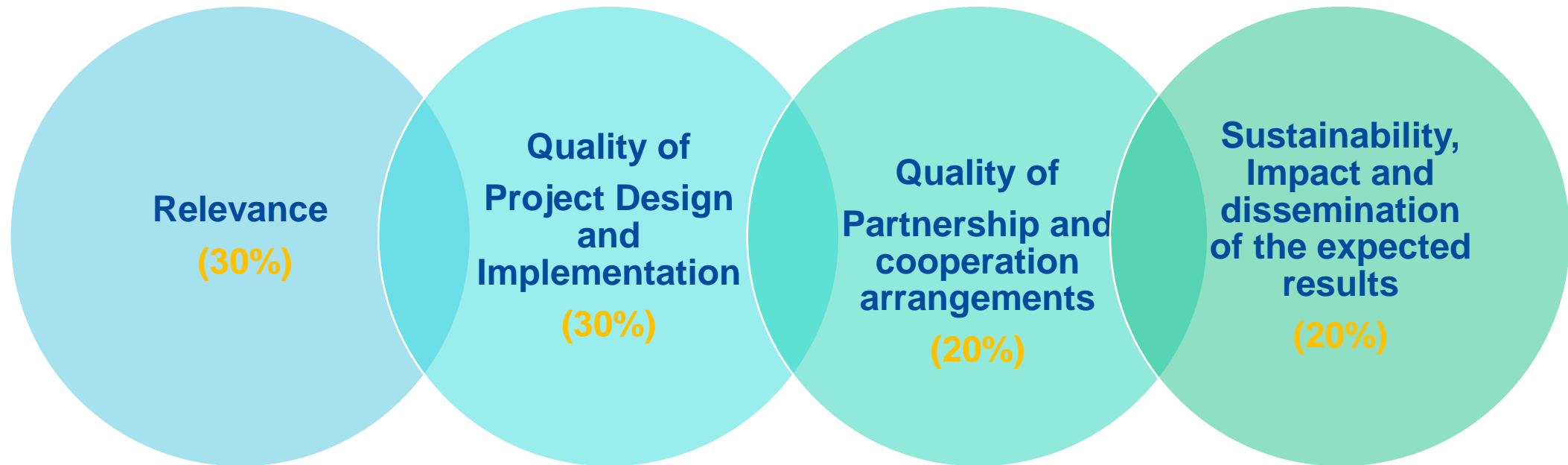
---

CBHE 2025

# AWARD CRITERIA



# Award criteria



## Step 1: Ranking of proposals

- ✓ Proposals must score **at least 60%** of the total score
- ✓ **At least 50%** of each award criterion.

## Step 2: Consultation of the EU Delegation(s)

- ✓ Only projects that have passed successfully the consultation of the EU Delegation(s) will be maintained for an EU funding, within the limits of the available budget per region.

---

CBHE 2025

# OTHER NOVELTIES



# Focus on EU values



## Award Criterion 1 (Relevance):

## Erasmus+ Programme guide, Part A:

- **EU Values:** The proposal is relevant for the respect and promotion of shared EU values, such as respect for human dignity, freedom, democracy, equality, the rule of law and respect for human rights, as well as fighting any sort of discrimination

### Important features of the Erasmus+ Programme

The following features of the Programme deserve special attention.

#### Respect for EU values

The Erasmus+ programme's implementation, and therefore, the programme beneficiaries and the activities implemented under the programme, have to respect the EU values of respect for human dignity, freedom, democracy, equality, the rule of law and respect for human rights, including the rights of persons belonging to minorities, in full compliance with the values and rights enshrined in the EU Treaties and in the EU Charter of Fundamental Rights.

In line with the grant agreements, the beneficiary's grant may be terminated or reduced if such provisions are not respected.



European  
Commission

Education, Audiovisual and Culture  
Executive Agency

# Guidelines on Artificial Intelligence



Strong  
Focus!

*Erasmus+ Programme Guide, Part C:*

## **Original content and authorship**

All applications for projects and accreditations must contain original content authored by the applicant or other organisations jointly applying for a grant. If considering the use of generative artificial intelligence (AI) tools for the preparation of the application, applicants should be conscious of the potential of plagiarism and should exercise careful consideration to ensure the application's appropriateness and accuracy, its compliance with intellectual property regulations, as well as its original content.



European  
Commission

Education, Audiovisual and Culture  
Executive Agency

# Application form

Logical Framework Matrix is no longer requested

Part C does not exist anymore – the information used to appear there now forms part of the revised Part A of the application form

Part A – includes now indication of Global Gateway under '**Fixed keyword**', **overarching priorities, regions**

**Maximum amount of pages for Part B: 40 pages!!** Any pages beyond this limit will be disregarded.



European  
Commission

Education, Audiovisual and Culture  
Executive Agency



# Application form – Part A

## In Part A of the application:

- ✓ Click the ‘Global Gateway’ fixed keyword
- ✓ Select most appropriate overarching priority from the ‘descriptors’
- ✓ Don’t forget to also choose the Region

Proposal ID SEP-211114905

Acronym test

### 1 - General information

?

Field(s) marked \* are mandatory to fill.

Topic ERASMUS-EDU-2025-CBHE-STRAND-1

Type of Action ERASMUS-LS

Call ERASMUS-EDU-2025-CBHE

Type of Model Grant Agreement ERASMUS-AG-LS

Acronym \* test

Proposal title \* Max 200 characters (with spaces). Must be understandable for non-specialists in your field.

Note that for technical reasons, the following characters are not accepted in the Proposal Title and will be removed: < > " &

Language *Please indicate the language of the proposal documents*

Duration in months *Estimated duration of the project in full months.*

Fixed keyword 1 *Word or words that best describe(s) the subject of your project.*

Add

Free keywords *Enter any words you think give extra detail of the scope of your proposal (max 200 characters with spaces).*

Abstract \*

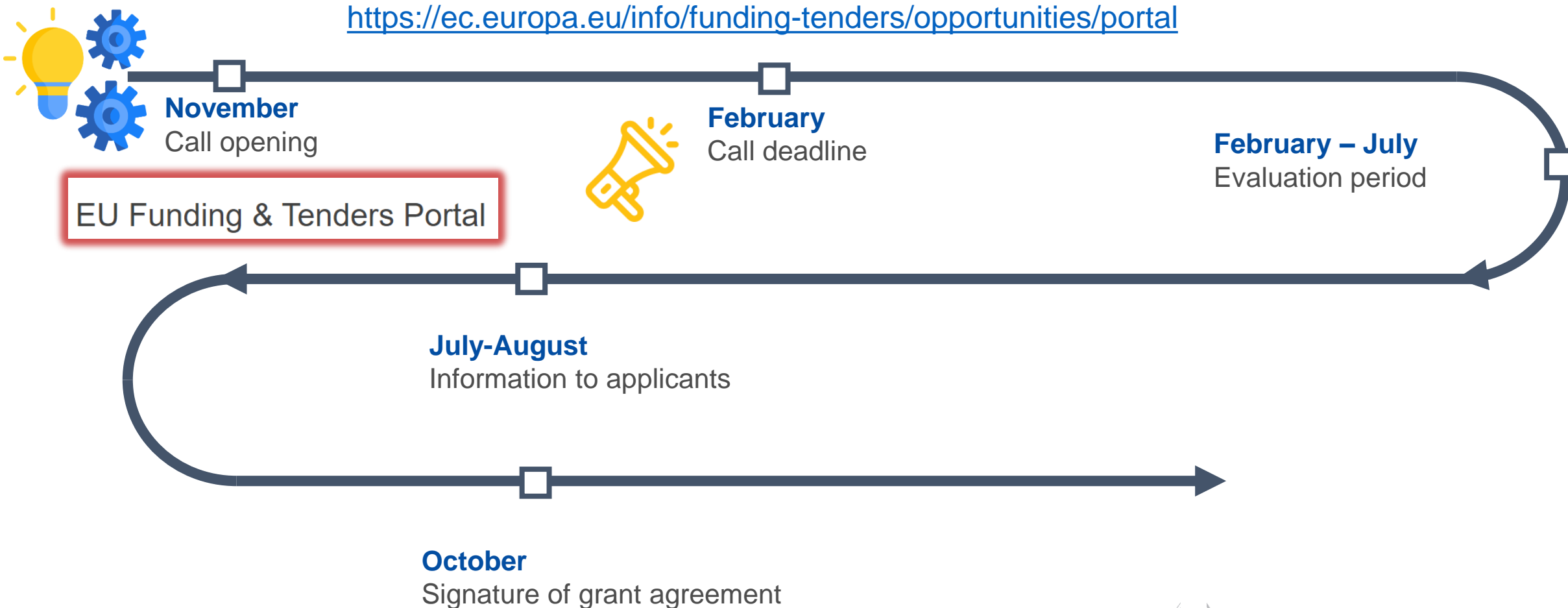
?



# Indicative Timeline

Capacity building in higher education (ERASMUS-EDU-2025-CBHE)

<https://ec.europa.eu/info/funding-tenders/opportunities/portal>



\* Please consult the final call conditions defined in the Programme Guide



European  
Commission

Education, Audiovisual and Culture  
Executive Agency

# How to submit a proposal?

- **Where?**

Applications must be submitted through the **European Commission's Funding & Tender Opportunities Portal** (F&TP) using the Portal Submission System:

<https://ec.europa.eu/info/funding-tenders/opportunities/portal/screen/home>

- **Who?**

Proposals must be created and submitted by a contact person of the coordinating organisation

- **When?**

**Publication: 19 November 2024**

**Proposal submission opening: 26.11.2024**

**Deadline: 6 February 2025**

**Applicants are highly recommended to submit proposals at least 48 hours prior to the call deadline.**



European  
Commission

Education, Audiovisual and Culture  
Executive Agency

# Erasmus+ CBHE 2025 promotion activities

General CBHE Infoday (online) organised by EACEA (05.12.2024)

- [Events \(europa.eu\)](https://eacea.ec.europa.eu/erasmus-plus/main_content/infoday_en)

Participation to National Erasmus+ Info-days organised by NAs, NEOs and ENFPs

- <https://erasmus-plus.ec.europa.eu/contacts/national-agencies>
- [Erasmus+ National Focal Points | Erasmus+ \(europa.eu\)](https://erasmus-plus.ec.europa.eu/contacts/national-agencies)
- [National Erasmus+ Offices | Erasmus+ \(europa.eu\)](https://erasmus-plus.ec.europa.eu/contacts/national-agencies)



European  
Commission

Education, Audiovisual and Culture  
Executive Agency